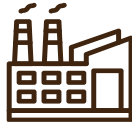




COMPANY OVERVIEW



Minsulate, established nearly 50 years ago, is now a leading name in thermal insulation in India.

Our products—loose wool, resin-bonded slabs and rolls, lightly bonded mattresses and lightly bonded rolls, nodulated wool and pipe sections—serve diverse insulation needs across buildings, industrial furnaces, underground pipes, and automobiles.

We cater to industries including steel, automotive, construction, and government sectors, with a strong presence across India and plans to export in the future.

The name “**Minsulate**,” coined by our director Mr. Navin Agarwal, combines “Mineral Wool” and “Insulation,” reflecting our core product and purpose.

FOUNDER'S VISION



Mr. Ratan Lal Agarwal founded Minsulate Manufacturing Company in 1973 with a vision to lead the thermal insulation industry through innovation, sustainability, and quality. Backed by industry insight and a passion for creating eco-friendly products, he laid the foundation for a lasting family business.

OUR MISSION





With 54 years of expertise in thermal insulation, Minsulate MC aims to transform the industry by delivering high-quality, eco-friendly products that meet Indian and international standards.




CORE VALUES

 **Quality Excellence:** Delivering top-tier insulation materials that meet rigorous standards.

 **Innovation:** Advancing through new materials, processes, and technologies.

 **Sustainability:** Transforming waste into eco-friendly products, supporting a circular economy.

 **Customer Focus:** Prioritizing the unique needs of clients, including major industrial players.

 **Expansion & Global Reach:** Aiming to grow product lines and export globally.

 **Integrity:** Upholding honesty, ethics, and trust in all business practices.

BUILD TO INSULATE

Minsulate is a high-performance insulation material for heat, cold, and sound insulation. Made from selected rocks and high-carbon coke, it's produced using advanced cupola furnace and spinning technology for consistent quality that meets IS and international standards.

Durable and flexible, **Minsulate** fits flat or curved surfaces, making it ideal for high-temperature and energy-saving applications across industries like power, steel, cement, and pharmaceuticals.

It also provides superior sound absorption and noise control, perfect for offices, studios, theaters, homes, and more. High-density options block and trap both sound and vibrations effectively.

MANUFACTURING FACILITY



Location:

Industrial town of Jamshedpur,
Jharkhand

Capacity:

1500 MT per month

Certifications:

ISO 9001:2015 (Quality Management
System)

ISO 14001:2015 (Environmental
Management
System)

ISO 45001:2018 (Occupational Health
& Safety management)

Address: Survey No. 183, Lakadia, Ta. Lakhpat
Web: www.minsulate.com



MINSULATE MFG. CO.

Survey No. 183, Lakadia, Ta. Lakhpat





PRODUCTS

LIGHTLY RESIN BONDED (LRB) MATTRESS

Minsulate LRB Mattresses are made from fine fibers of insulation wool. LRB Mattresses are flexible in nature and provides excellent stability due to controlled thickness and uniform fiber distribution. LRB Mattresses are available with one side or both sides or SS wire netting.

BUILDING ROLL (RB)

Its a thermal insulation material, made of bonded fiber insulation having maximum resistance to the passage of heat. It is made of fine fibers spun from molten rocks of selected quality and chemically coated with thermosetting resin binders with having triple benefits like thermal insulation, fire protection and acoustical properties.



TECHNICAL SPECIFICATIONS:

- SERVICE TEMPERATURE:** -50° C TO +750° C
- SIZE:** 1640 X 1220 MM
- DENSITY IN KG/M3:** 85, 100, 120, 128, 140, 150, 160
- THICKNESS IN MM:** 25, 40, 50, 60, 65, 75, 100
- CONFORMING STANDARDS:** IS 8183

Application:

Boilers, Vessels, Furnaces, Ducts, Tanks, Pipelines & Many More.

TECHNICAL SPECIFICATIONS:

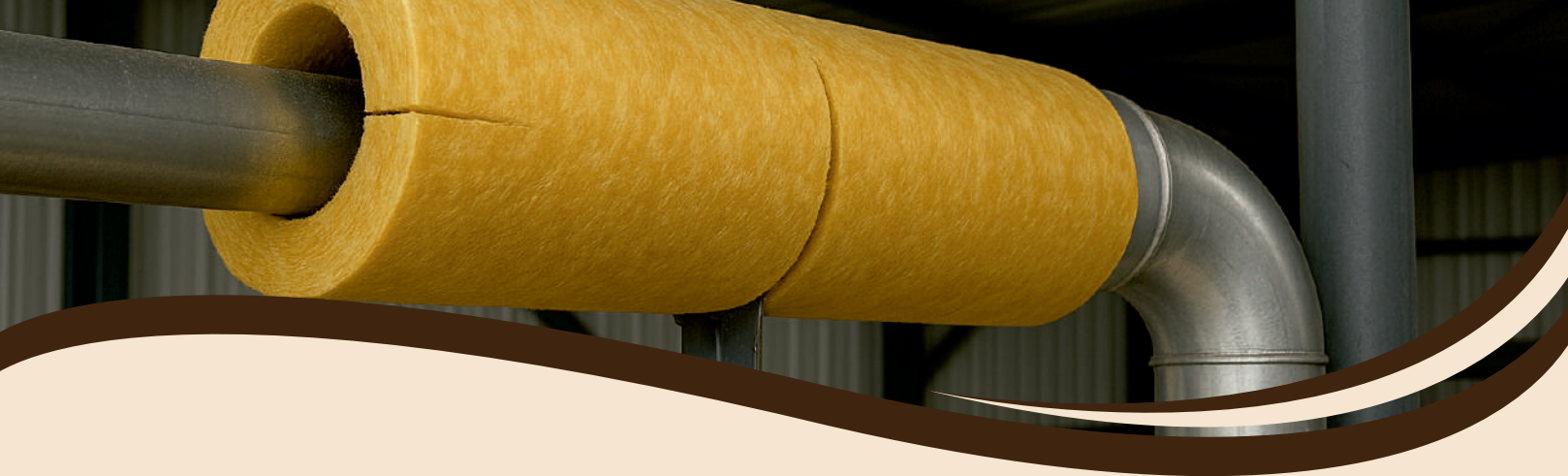
- SERVICE TEMPERATURE:** -50° C TO +550° C
- DENSITY IN KG/M3:** 48, 64
- THICKNESS IN MM:** 40, 50, 60, 65, 75, 100
- WIDTH IN METERS:** 0.50, 1.00, 1.10
- LENGTH IN METERS :** 4, 5, 6, 10
- Laminations:** Aluminium foil Standard width : 1.1 RMT
- CONFORMING STANDARDS :** IS 8183



APPLICATION:

In Pre-Engineered Buildings
Both in Roof and Walls, Industrial Roof Ceiling,
Cement and Sugar Plants & Many More.





SECTIONAL PIPE

Minsulate Pipe

Sections have controlled density and thickness tailor-made for easier application. The pipe sections are made with split hinged for faster application at site.

TECHNICAL SPECIFICATIONS:

SERVICE TEMPERATURE: -50°C +750°C.

OD. OF PIPE: 21.3 TO 355.6 MM

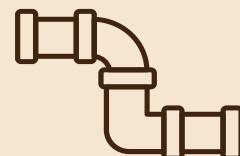
DENSITY IN KG/M³: 144

THICKNESS IN MM: 25, 40, 50, 60, 65, 75, 100

STANDARD LENGTH: 1 RMT

CONFORMING STANDARDS: IS 9842

With / Without Aluminium foil.



APPLICATION:

Steam Pipeline, Process Pipeline & Many More.

Lightly Resin Bonded (LRB) Roll

Similar to Building Rolls (RB), LRB Rolls also manufactured and supplied for higher temperature applications.

TECHNICAL SPECIFICATIONS:

SERVICE TEMPERATURE: -50° C TO +550° C

DENSITY: KG/M³: 85, 100

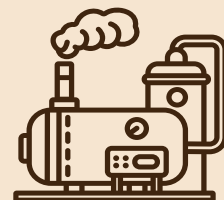
THICKNESS IN MM: 50, 60, 75

WIDTH IN MTRS: 0.6, 0.8, 1.22

LENGTH IN MTRS: 3, 4

WIRE NETTING: ¾" X 24G

CONFORMING STANDARDS: IS 8183.



APPLICATION:

For wrapping large curved surfaces like Boilers, ESP, Ducts, Ovens, Furnace, Tanks, Pipelines, Chimney walls etc.





MINSULATE WOOL

Minsulate Superfine Loose wool having exceptionally long fibers and superior technical properties is recommended for thermal and acoustical insulation.

Minsulate Superfine Loose wool is available in oil and oil free variants.

TECHNICAL SPECIFICATIONS:

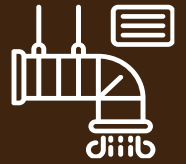
SERVICE TEMPERATURE: -50° C TO + 700° C

PACKING IN KG: 40

CONFORMING STANDARDS: IS 3677

APPLICATION:

Brake Lines, Duct Filling, Ovens & Many More.



RESIN BONDED (RB) SLAB

Minsulate Resin Bonded (RB) Slab are manufactured for Thermal and Acoustical Insulation.

Minsulate slabs are highly durable as well as resilient while displaying exceptional load bearing characteristics.

TECHNICAL SPECIFICATIONS:

SERVICE TEMPERATURE: -50° C TO +750° C

SIZE: 1000 X 500 MM & 1200 X 500 MM WITH OR WITHOUT AL FOIL FSK FACING

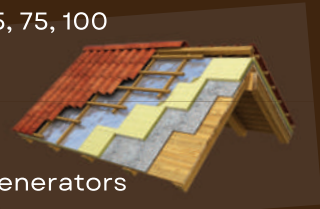
DENSITY IN KG/M³: 48, 64, 96, 128, 144, 150, 160

THICKNESS IN MM: 25, 40, 50, 60, 65, 75, 100

CONFORMING STANDARDS: IS 8183

APPLICATION:

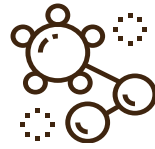
Under Deck Roof Ceiling, Roofing, Auditorium, Theaters, Side Walls, Generators & Many More..



PRODUCT CHARACTERISTICS



Fire Resistance: **Minsulate** can withstand temperatures up to 750°C (1,382°F), making it an excellent material for fireproofing and fire protection.



Biologically Inert: **Minsulate** is chemically neutral, making it resistant to pests, fungi, and bacteria, ensuring it remains hygienic and safe for long-term use.



Thermal Insulation: With low thermal conductivity. Insulation wool is highly effective at reducing heat loss or gain, improving energy efficiency.



Moisture Resistance: It does not absorb water, maintaining its insulating properties even in humid or wet conditions.



Sound Absorption: The porous structure of **Minsulate** excels at absorbing sound and reducing noise transmission, making it ideal for both acoustic and soundproofing applications.



Non-toxic: Free from harmful chemicals, **Minsulate** is safe for human health, making it suitable for residential and commercial environments.



High Compressive Strength: While lightweight, **Minsulate** can withstand significant mechanical pressure without losing its insulating properties, making it durable in high-traffic or industrial settings.



Durability: Resistant to rot, mold, and mildew. **Minsulate** is built to last and is suitable for both interior and exterior use.



Sustainability: Made from natural rocks and processed steel waste.

Minsulate is an environmentally friendly material that is fully recyclable and supports green building initiatives.



Ease of Handling: Lightweight and easy to install, **Minsulate** is simple to handle and cuts easily, making it cost-effective for both professional and DIY projects.

PRODUCT APPLICATIONS

Building Insulation



Thermal Insulation: Provides superior heat resistance in walls, roofs, and floors, improving energy efficiency.
Acoustic Insulation: Absorbs sound and reduces noise transmission in both residential and commercial buildings.
Fire Protection: Non-combustible and heat-resistant, essential for fireproofing, cavity fire stopping, and fire barriers.

Fireproofing & Passive Fire Protection



Fire-Resistant Panels: Used in fire-resistant wall systems to prevent fire spread.
Steel Structure Protection: Safeguards steel beams and columns from fire damage, maintaining structural integrity.

Industrial Applications



Pipe & Duct Insulation: Effective for temperature control and energy savings in high-temperature environments.
Soundproofing Machinery: Reduces noise from industrial equipment.
Blast Furnace Insulation: Insulates high-heat areas in steel manufacturing.

Agricultural Applications



Hydroponic Systems: Ideal growing medium with excellent water retention and aeration for soil-free farming.
Greenhouses: Provides insulation to maintain optimal growing temperatures.



Acoustic Panels & Soundproofing

Commercial Applications: Used in offices, theaters, and recording studios for sound absorption and noise reduction.



Residential Soundproofing:

Installed in walls, floors, and ceilings to minimize noise between rooms.



Roof Insulation

Flat & Pitched Roofs: Offers thermal insulation for energy efficiency, preventing heat loss and cold bridges.

External Insulation & Cladding

Wall Insulation: Enhances thermal performance and fire safety for external wall systems.

Facade Insulation: Provides thermal and fire protection in ventilated facades and curtain walls.

Duct Insulation: Helps maintain temperature and reduce energy consumption while minimizing noise from HVAC systems.



Acoustic Ceiling Tiles



Sound Control: Used in offices, classrooms, and conference rooms to reduce noise and enhance sound quality.

Marine & Shipbuilding



Marine Insulation: Provides thermal, acoustic, and fireproofing solutions for ships and offshore structures.

Sustainable & Eco-Friendly Construction

Contributes to eco-friendly construction with sustainable, durable insulation solutions that reduce energy consumption.

Energy Storage



Thermal Energy Storage: Used in systems requiring heat retention and release for energy-efficient buildings.

Transportation Insulation



Vehicle Insulation: Used in buses, trains, and trucks for both thermal and sound insulation, improving comfort and energy efficiency.



QUALITY ASSURANCE AT **Minsulate**[™]



At Minsulate, customer satisfaction is our highest priority, and we are dedicated to delivering top-quality products on time while meeting or exceeding industry standards. Our commitment to innovation is driven by ongoing research and development, leading to advancements such as the introduction of LRB in roll form and the adoption of gas-based baking processes to replace fossil fuels, enhancing sustainability. We uphold strict quality control across every stage of production—from raw material procurement to stitching, packing, storage, and dispatch—while fully complying with national and international standards.

Our in-house testing protocols include regular slag and hard coke testing, hourly furnace viscosity checks, and detailed assessments of finished products. These include batch-wise testing for shot, moisture, binder content, density, and fibre characteristics, as well as evaluations for fire resistance, heat tolerance, pH, chloride levels (using RO-treated water), and vibration durability. Each truck is carefully inspected before delivery to ensure proper stitching, accurate weight, and secure packing. Additionally, thermal conductivity is tested in NABL-accredited labs to ensure external verification. These robust quality measures guarantee that every Minsulate product delivers unmatched performance and reliability.

IMPORTANCE AND NEED OF **Minsulate**[™]



Minsulate is a vital solution for modern insulation needs, offering superior thermal, fire, and acoustic performance across construction, industrial, and agricultural sectors. Made from sustainable insulation wool, it supports the growing demand for energy-efficient and eco-conscious materials.

With excellent thermal insulation, Minsulate significantly reduces energy consumption by minimising heat loss or gain, lowering heating and cooling costs. Its non-combustible nature ensures fire safety by preventing the spread of flames and smoke, making it ideal for fire-resistant walls, ceilings, and structural components. Highly versatile, Minsulate serves a wide range of applications—from building insulation and hydroponics to industrial soundproofing—across construction, agriculture, and transport industries.



SUSTAINABILITY AT **Minsulate**[™]

Sustainability is at the core of everything we do at Minsulate. We are committed to reducing environmental impact while delivering high-quality insulation through responsible manufacturing practices, waste reduction, and pollution control.

We manage materials like silica with great care, ensuring they are reused or treated responsibly, never discarded in nature. All production waste and rejected materials are recycled into the manufacturing process to minimise resource consumption and landfill use. Non-recyclable by-products, such as furnace slag, are sent to certified waste treatment facilities for safe disposal.



Our production processes are designed for minimal pollution, with emissions carefully filtered to ensure clean air and environmental protection. Beyond environmental responsibility, Minsulate also creates social impact—our insulation improves energy efficiency, reduces carbon emissions, and enhances building safety and comfort. We contribute to local communities by creating jobs, supporting development initiatives, and partnering with local agencies for waste and recycling management.

INDUSTRY ASSOCIATION

Member of Confederation of Indian Industry (CII)

Minsulate continues to build on its legacy of quality, innovation, and sustainability, positioning itself as a trusted leader in the thermal insulation sector, dedicated to delivering value to our customers and contributing to a sustainable future.



+919279773988



info@minsulate.com, minsulatemanufacturing@rediffmail.com



Plot No. M 9/10, 4th Phase, Adityapur
Industrial Area, Gamharia, Jamshedpur -
832108



Minsulate
Manufacturing
Company



OUR BUSINESS PARTNERS



CONTACT US

+919279773988

info@minsulate.com, minsulatemanufacturing@rediffmail.com

Plot No. M 9/10, 4th Phase, Adityapur Industrial Area, Gamharia, Jamshedpur - 832108

